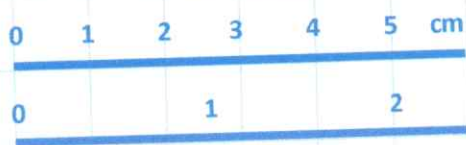


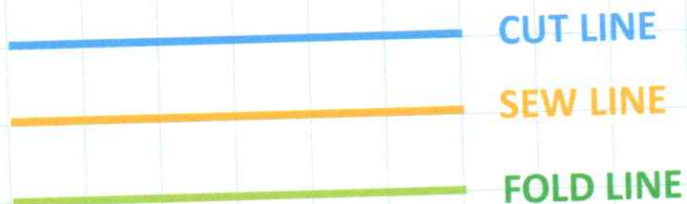
# RETRO BAG PATTERN



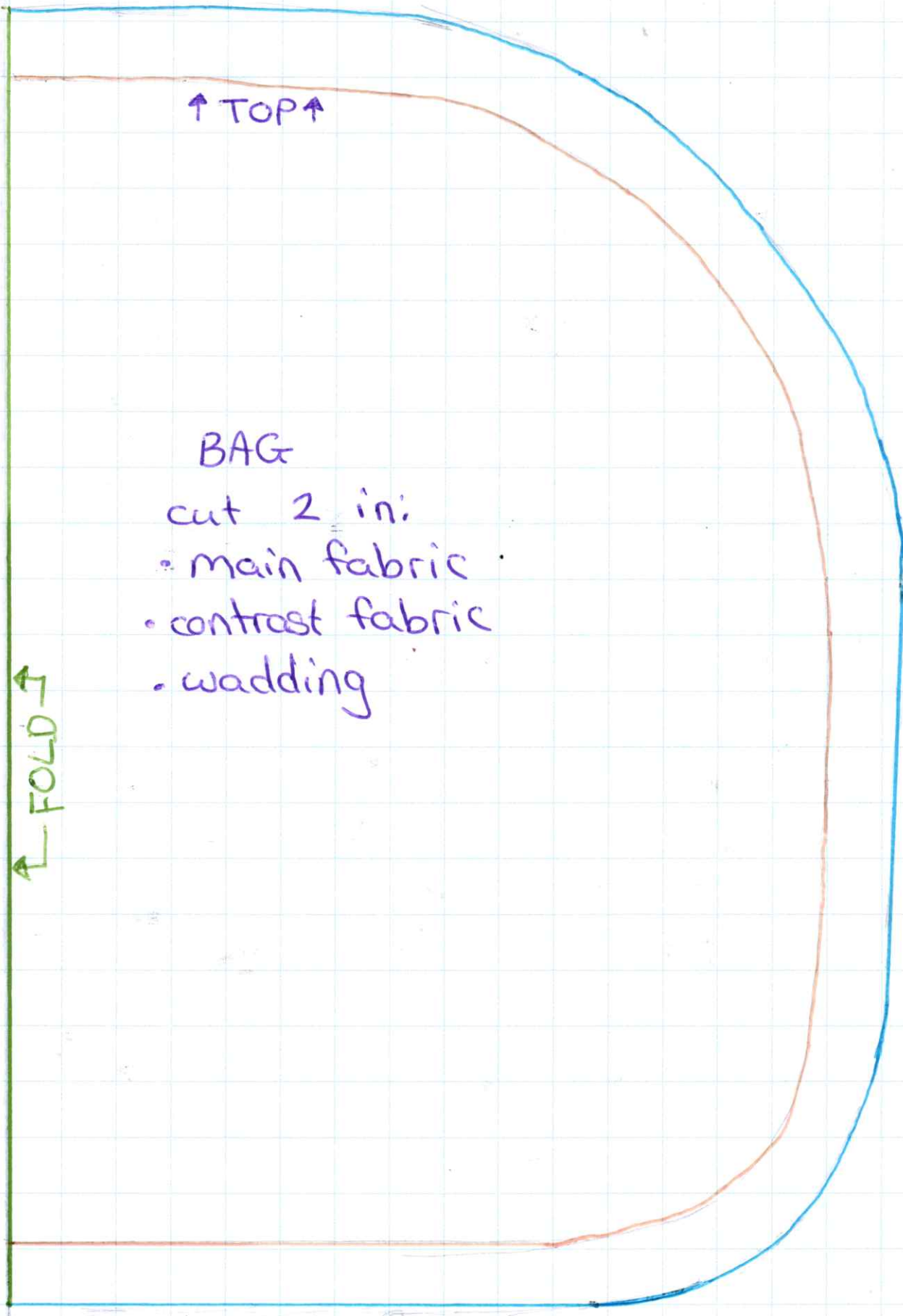
SCALE 1 SQUARE = 1cm<sup>2</sup>



KEY



© Suzy Todd 2023 - no part of this pattern may be reproduced or transmitted by any means, except as permitted by UK copyright law or the owner.



↑ TOP ↑

### BAG

cut 2 in:

- main fabric
- contrast fabric
- wadding

↑ FOLD ↑

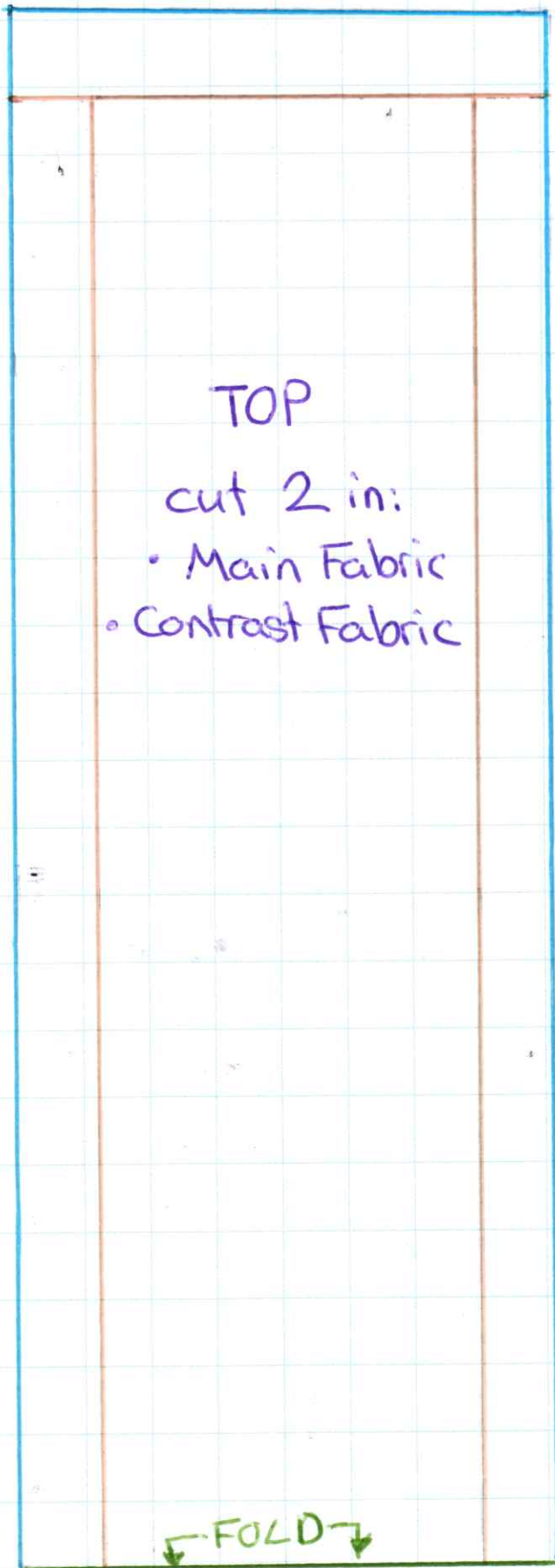


↑ FOLD ↑

BOTTOM

cut 1 in:

- Main Fabric
- Contrast Fabric
- Wadding



TOP

cut 2 in:

- Main Fabric
- Contrast Fabric

↓ FOLD ↓

webbing for straps - not actual size - cut 2 x 27"  
leave 6" open each end.



ZIP - cut 1 at 6"  
cut 1 at 18"

Top ↑

POCKET

cut 1 in contrast fabric